

Kronos Training



About Kronos

Kronos is the Global Leader in Workforce management Solutions that enable organizations to control labor costs, minimize compliance risk, and improve Workforce Productivity.

Kronos Workforce Dimensions is a suite of HR and workforce management applications including HRMS, payroll, time and attendance, absence management, scheduling, and Time tracking etc. We designed the course content based on the clients feedback and the well versed trainers.

Kronos Course Key Features

25 hours of Learning on Kronos

A 360 degree learning approach that you can adapt to your learning style



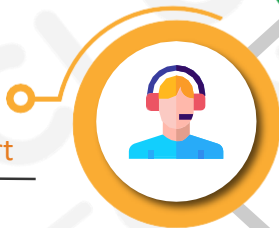
2+ Realtime Projects

Gain real time experience and profound knowledge by involving in hands on projects and get hired quickly



24x7 Support

Having any technical issue? Reach out our Support to have an immediate solution



Job Placement Assistance

Our personalized and interactive learning experience will help you to land at your dream company.



Pay in easy Installments

With secured hassle free payment gateway you can pay the course fee in two installments



Live sessions with Instructor

The best approach of learning is achieved by having a interactive session. With live interactive sessions you can fulfill your goals at a faster pace



Mock Interviews

We have dedicated sessions after the training classes for interview preparation.



Why Should You Learn Kronos Course?

It's an all-cloud suite that contains modules for: timekeeping, scheduling, HR, Payroll, talent acquisition, and much, much more. Kronos maintains that they can port approximately 75% of their Workforce Central (their legacy HCM product) customers data and configurations to Workforce Dimension Suite.

Major companies using Kronos are DHL, EMC2, Gartner, Peoplesoft, Fossil, SMS Holdings, Perdue, Airgas, The Durst Organization Inc.

The average salary of Kronos per annum is \$368,200 – Neuvoo

280 Companies that are using Kronos HR & Employee Management Systems Software.



Who Should Learn Kronos?

The following job roles will get benefited from learning the Kronos course:

- ❖ Freshers or graduates
- ❖ Developers
- ❖ IT software professionals



About CloudFoundation

CloudFoundation - Online global training platform connecting individuals with the best trainers around the globe. With the diverse range of courses, Training Materials, Resume formats and On Job Support, we have it all covered to get into IT Career. Instructor Led Training - Made easy.



Course Overview

Kronos Workforce Dimensions is a suite of HR and workforce management applications including HRMS, payroll, time and attendance, absence management, scheduling, and Time tracking etc.

Modern 'Workforce Management' encapsulates different aspects of staff scheduling and time management such as labor forecasting, attendance, leave management, overtime compensation and work based analytics, etc.

Course Content

Kronos course includes on various topics HCM & WFM, Kronos Workforce timekeeper tool, Employee Tasks, Manager Tasks & Payroll manager Tasks, Workforce time keeper Genies & Employee genies, Workforce Timekeeper scheduler etc

24*7 technical support for solving your concerns instantly.



Kronos WFM Introduction

- ❖ What is HCM & WFM
- ❖ What is Kronos Workforce timekeeper tool?
- ❖ What does Kronos tool do and available modules in Kronos?

Timekeeper processes and Application Walkthrough

- ❖ Employee Tasks, Manager Tasks & Payroll manager Tasks
- ❖ Basic navigation
- ❖ Forgot password
- ❖ Navigator View (Home workspace, Widgets & Widget parts)
- ❖ Gensis introduction
- ❖ Workforce time keeper Genies & Employee genies
- ❖ Search tools (Quick find & Hyper find current period)
- ❖ Using Online Help
- ❖ Using Setup

Navigating timecard

- ❖ Timecard area
- ❖ Timecard widget part areas
- ❖ How to add/edit punches
- ❖ How to add/edit pay codes
- ❖ Different types Exceptions and reviewing/clearing exception
- ❖ Unsaved data
- ❖ Approving Overtime
- ❖ Adding comments
- ❖ Moving pay code amounts



- ❖ Timecard visuals
- ❖ How to transfer an employee to different department and work rule
- ❖ Approving timecard
- ❖ Approval process
- ❖ Signoff process
- ❖ Timecard audit process
- ❖ Lock payroll
- ❖ Historical corrections
- ❖ Rule Analysis



People Editor & Reports

- ❖ People Basics
- ❖ Different licenses
- ❖ Creating or Modifying employees
- ❖ Terminating Employees
- ❖ Timekeeper reports
- ❖ Report categories and Descriptions
- ❖ Running and viewing reports
- ❖ Scheduling reports

Workforce Timekeeper scheduler

- ❖ What is the basic scheduling and difference between Basic and advanced scheduling?
- ❖ Scheduling benefits
- ❖ Scheduling editor Widget and Actions Menu
- ❖ Shifts & Adding shifts to an employee

- Adhoc shifts
- Shift templates
- Schedule patterns
- Pattern templates

- ❖ What is Schedule Group
- ❖ How to add schedule pattern at group level

Organization setup & Pay policies

- ❖ Overview
- ❖ Labor level
- ❖ Labor level entries
- ❖ Labor level sets & Employee Group
- ❖ Pay code definition
- ❖ Combined pay code
- ❖ Display order

Pay policies

- ❖ Rounding introduction
- ❖ Different types of rounding rules
- ❖ Punch rounding rules
- ❖ Exceptions
- ❖ Break rules
- ❖ Bonus and Deductions
- ❖ Schedule deviations
- ❖ Overtimes
- ❖ Zones
- ❖ Combination rules
- ❖ Pay code distribution

- ❖ Work rules
- ❖ Duration pay code
- ❖ Holiday table
- ❖ Holiday Zone rule
- ❖ Holiday credit rule
- ❖ Holiday profile
- ❖ Employment terms
- ❖ Fixed rules
- ❖ Sign off restrictions
- ❖ Punch interpretation
- ❖ Processing order
- ❖ Pay rules

Accruals

- ❖ accrual codes
- ❖ Dates and Date patterns
- ❖ Probation Periods
- ❖ Grants
- ❖ full Time Equivalentents
- ❖ Limits
- ❖ Accrual Policies
- ❖ Accrual Profile
- ❖ Accrual Balance Cascades
- ❖ Cascading Pay Codes
- ❖ Cascade policies cascade profile



Basic scheduler set up & Access profiles

- ❖ Schedule periods
- ❖ shift template
- ❖ Pattern template
- ❖ Schedule group
- ❖ Login profile
- ❖ FAP
- ❖ GDAP
- ❖ DAP

Navigator set up Display preferences

- ❖ Widget and Widget parts
- ❖ Workspaces
- ❖ Navigator
- ❖ Navigator profiles
- ❖ Custom data fields
- ❖ Telephone fields
- ❖ Workforce genie column sets
- ❖ Workforce genie building blocks
- ❖ Custom URLs
- ❖ Custom URL profiles
- ❖ Display profiles

Common Setup

- ❖ Comments
- ❖ Hyper find queries
- ❖ Hyper find profiles
- ❖ Query manager
- ❖ Worker type
- ❖ Delegate profile

Reviews

The trainer gives knowledge of all topics through effective exercises. The support team is very compassionate.

Alamara Jamadar

HR Officer, Associate CIPD



Immeasurable online content. The tutors have good experience on the subject. Self-learning videos accommodate a lot, too. Thanks, CloudFoundation.

Kalakota V

Agile Integration Systems Analyst at IBM



The experience has been extremely satisfying. I like the interaction method and how the instructor acknowledges to subjects and provide feedback in real time.

Paul Aldred

Conversationalist at Blue Smart Fish



The live instructor was absolutely incredibly gentle and executed all our doubts. The course with CloudFoundation has admittedly been a great encounter because of the way the instructors emphasized the topics in an easy method.

Erick Njovu

Senior HR Systems Analyst (Workday)



Senior Talent Acquisition Specialist at Ness Digital Engineering

Mohd Haji

Exceptional outstanding experience.



[Read More Success Stories](#)

Trusted By Companies **Worldwide**
& 410K+ Learners



saama

SOAIS

people*TECH

accenture

CLIFFORD
CHANCE

HCL

nuvépro

Cognizant

Cotelligent

AVALON



Diligent



NUCLEUS
SOFTWARE





CLOUD FOUNDATION



Contact Details

USA: +1-3236785557

UK: +44-1224-015200

India: +91- 7847975239

<https://cloudfoundation.com/>